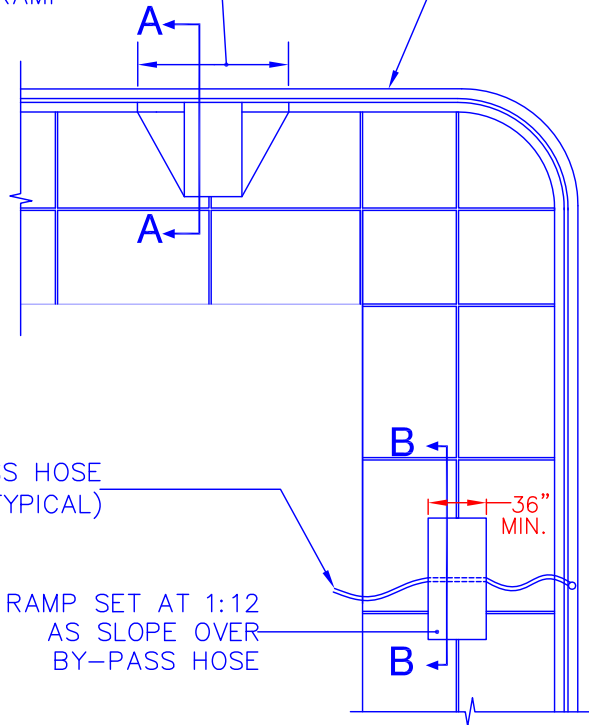


PIPE TO BE BURIED
AT THE LIMITS OF
THE RAMP

6" BY-PASS PIPE
(TYPICAL)



1/2" BY-PASS HOSE
(TYPICAL)

RAMP SET AT 1:12
AS SLOPE OVER
BY-PASS HOSE

36"
MIN.

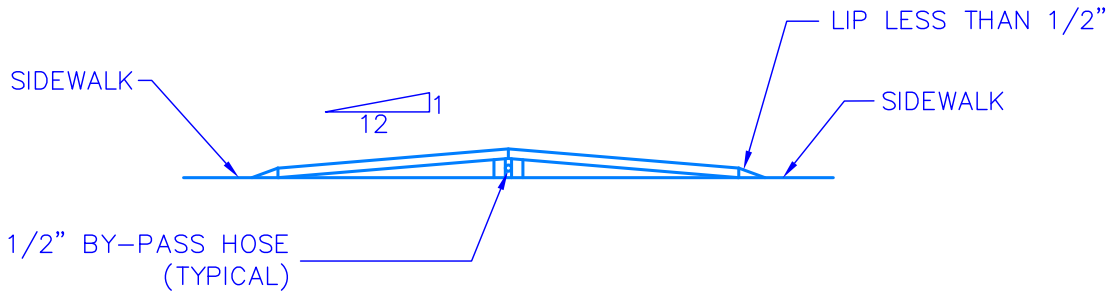
EXISTING RAMP
SIDEWALK

NO LIP LEFT AFTER
INSTALLATION OR
REMOVAL

STREET



SECTION A - A



SECTION B - B

Location:Filename: V:\eng\ACAD_STDI\Technical Details\A - Water Details\A-12 - By-Pass Pipe at Sidewalk Ramps.dwg
Plotted on: Tuesday, January 15, 2013 - 12:29 PM by Donnohe, William



**Boston Water and
Sewer Commission**

HARRISON AVENUE, BOSTON, MA 02119
(617) 989-7000 www.bwsc.org

BY-PASS PIPE AT SIDEWALK RAMPS

Scale: Not To Scale

DATE:
Apr 30, 2012

DETAIL NO.
A-12